

**Fig. 850**  
**Cast Iron - Wafer Pattern**

**FEATURES AND BENEFITS**

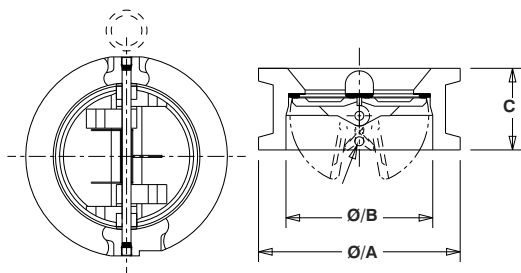
- Double door wafer pattern with spring assisted closure
- Elastomer seat vulcanised to the body casting to ensure extended seal life
- Suitable for mounting in horizontal and vertical pipelines
- Ideal for fitting between flanges to BS EN 1092-2



**MATERIAL SPECIFICATION**

Component	Specification BS EN
Body	A536 65-45-12
Plate	B584 C83600
Spring	SUS 316
Hinge Pin	SUS 304
Stop Pin	SUS 304
Retainer	A105
Body Bearing	SUS 304
Plate Bearing	SUS 304
Eye Bolt	A105
Seat	EPDM

**DIMENSIONAL DRAWINGS**



**PRESSURE/  
TEMPERATURE  
RATING**

25 bar up to 120°C

**TEST PRESSURES  
(HYDRAULIC)**

Shell: 37.5 bar  
Seat: 27.5 bar

**SPECIFICATION**

Face-to-face in accordance with BS 5155 (long pattern) ISO 5752 (long pattern).

Suitable for fitting between flanges to BS 4504 PN10/16. ANSI B16.1 Class 125 and BS 10 Table D/E.

Sizes 150mm and above are fitted with an eyebolt.

**DIMENSIONS AND WEIGHTS**

Nom Size	DN	40	50	65	80	100	125	150	200	250	300	350	400	450	500	600
A	mm	86	105	124	137	168	194	222	276	340	400	457	507	565	625	731
B	mm	60	60	73	89	114	141	168	219	273	324	356	406	457	508	610
C	mm	43	54	54	57	64	70	76	95	108	143	184	191	203	213	222
Weight	kg	1.8	2.5	3.5	4.5	8	10	13	28	45	68	95	132	147	202	265

Every effort has been made to ensure that the information contained in this publication is accurate at the time of publishing. Hattersley Ltd assumes no responsibility or liability for typographical errors or omissions or for any misinterpretation of the information within the publication and reserves the right to change without notice.