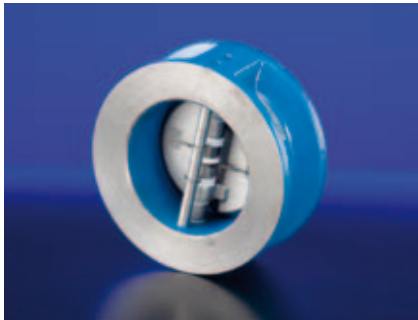


Fig. 850  
Cast Iron - Wafer Pattern

**FEATURES AND BENEFITS**

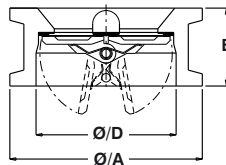
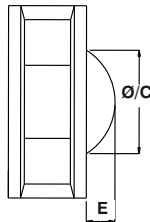
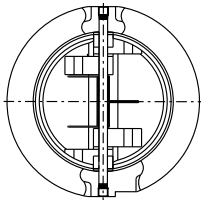
- Double door wafer pattern with spring assisted closure
- Elastomer seat vulcanised to the body casting to ensure extended seal life
- Suitable for mounting in horizontal and vertical pipelines
- Ideal for fitting between flanges to BS EN 1092-2



**MATERIAL SPECIFICATION**

Component	Material	Specification BS EN
Body	Cast Iron	BS1452 GR220
Seat	EPDM	
Disc	Gunmetal	BS1400 LG2
Shaft	Stainless Steel	BS970 BS970 304 S12
Spring	Stainless Steel	BS970 BS970 304 S12
Washer	Stainless Steel	
Seal	EPDM	
Setscrew	Stainless Steel	
Stop Pin	Stainless Steel	BS970 304 S12
Bushing	Teflon	

**DIMENSIONAL DRAWINGS**



**PRESSURE/  
TEMPERATURE  
RATING**

16 bar up to 120°C

**TEST PRESSURES  
(HYDRAULIC)**

Shell: 24 bar

Seat: 17.6 bar

**SPECIFICATION**

Face-to-face in accordance with BS 5155 (long pattern) ISO 5752 (long pattern).

Suitable for fitting between flanges to BS 4504 PN10/16, ANSI B16.1 Class 125 and BS 10 Table D/E.

Sizes 250mm and above are fitted with an eyebolt.

**DIMENSIONS AND WEIGHTS**

Nom Size	mm	65	80	100	125	150	200	250	300	350	400	450	500	600
A	mm	118	140	158	188	212	268	325	375	430	475	528	580	690
B	mm	45	64	64	70	76	89	114	114	127	140	150	152	178
C	mm	59	69	90	110	136	185	225	278	331	381	430	475	575
D	mm	84	100	115	135	160	210	256	306	356	406	460	510	610
E	mm	13.7	15.7	25.2	33.7	43.2	61.2	71.7	96.7	121.7	146.7	155	175	195
Weight	kg	3	4	5	6	9	13	23	31	48	62	86	104	181

Every effort has been made to ensure that the information contained in this publication is accurate at the time of publishing. Hattersley Ltd assumes no responsibility or liability for typographical errors or omissions or for any misinterpretation of the information within the publication and reserves the right to change without notice.